

Features of Inspire

3in1

Camera provides more than 1 way to detect intraoral diseases
3 in 1 feature: Dental camera, Transillumination, and Fluorescent technology all in one device.

Multi function



Seamless treatment
User can use all the device functions of an intraoral camera, transillumination, and fluorescent seamlessly by simple key press without stopping treatment.



Able to select appropriate disease detection mode
User can take a single image or multiple images at once depended upon the mode they choose.

Image quality



Macro to infinity
Camera is able to focus from macro mode (close) to infinity that includes a full arch and face shot.



Auto-focus
Camera is able to focus in any position not only inside of oral cavity but also full arch and face shot.



FHD image support
The device shows FHD (1080p) in live image supported by a 5M sensor.



Color impressions
Adjust the color impression on camera to fit different monitors or screen.



Black&White function
Capture and save X-ray film image to PC

Ergonomic design



Dental handpiece design
Most familiar design for dentists.



Metal body case
Metal body case increases product durability.



Slim head & Retraction head design
Slim head design makes it easier to approach the oral cavity with camera. And retract patient's tongue and cheek to get better image.



Dual capture buttons
Capture buttons are placed on the top and bottom side of camera to make for an easy capture in any position



LED indicators
LED indicators show the device status and mode.

Convenience



Mouse function
Built-in mouse function for user convenience.



Zoom function
Ability to enlarge the image with zoom feature to support user convenience.



Support twain driver
Support twain driver allows for use in almost any dental imaging software.



Software compatibility
Able to be used with almost any dental imaging software in the market.



Detachable USB cable
Detachable USB cable makes it easy to move the camera to other dental chairs.

Dental Camera

-IC-WHT60 -IC-WHY61
-IC-DCAM70 -IC-DCAU71
-IC-EZAM80 -IC-EZAU81
-IC-WHMA90 -IC-WHCD100

Curing Light

-CL-DLT30 -CL-DL10
-CL-DC20 -CL-AT24

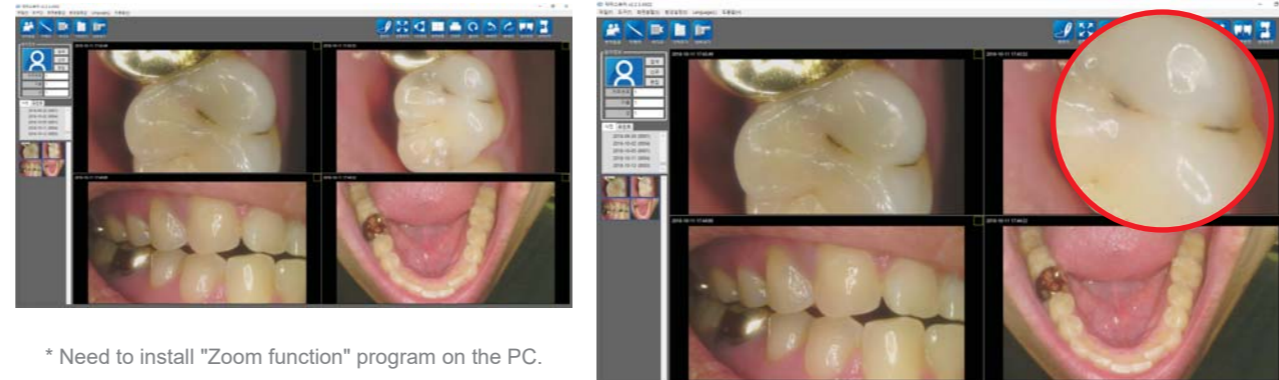
Apex Locator

-AL-DF10 -AL-DFA20



Zoom function

Ability to enlarge the image with zoom feature to support user convenience.



* Need to install "Zoom function" program on the PC.



Software compatibility

Able to be used with almost any dental imaging software in the market.



1 Specification

Model	IC-WHCD100	
Camera	Power source	5V (USB power)
	Size	Approx. 129 x 21.5 x 32 mm
	Weight	Approx. 61g (2.2oz)
	Sensor type	5M CMOS sensor
	Lighting	LED
	Focusing	Auto-focus
	Focus range	Macro to infinity
USB cable	cable length	Approx. 3 M (9.8ft)

2 Recommended PC system

PC system:	3.3GHz CPU, 4GB RAM
OS:	Windows 7
USB port:	USB 2.0



The wireless pack make the product to be wireless dental disease detector.

GoodDrs



Inspire

Multipurpose
Intraoral Disease
Detector

Autofocus Dental Camera with Mouse



GoodDrs

www.gooddrs.com
E-mail. info@gooddrs.com



Good Doctors Co., Ltd.
#208, B-dong, 283 Bupyeong-daero, Bupyeong-gu (Woolim Lions Valley, Cheongchoen-dong), Incheon, 21315, Republic of Korea
Tel: +82 32 424 6325 Fax: +82 32 424 6326

CE

Dec.2018 rev.1

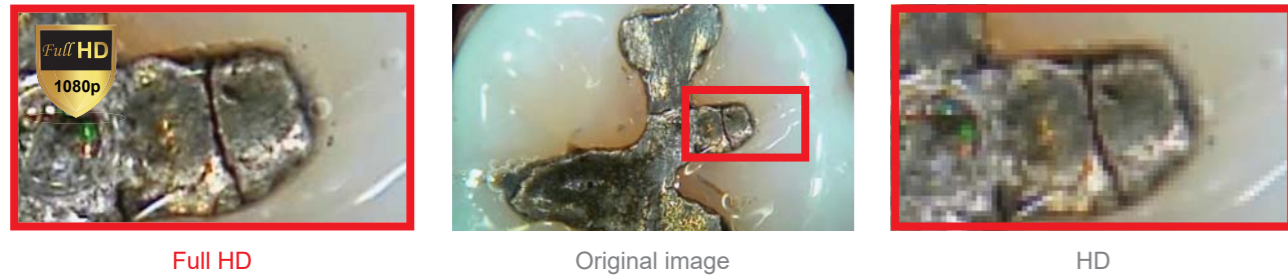
Patent pending

Macro to Infinity Dental Camera Mode
MI mode

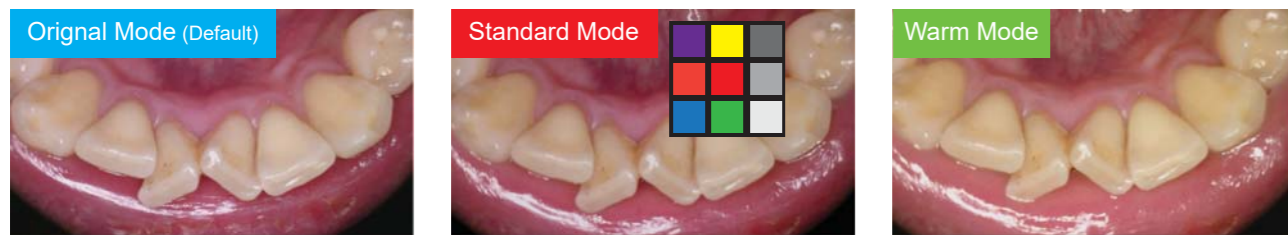
Macro to Infinity
Camera is able to focus from macro mode (close) to infinity that includes a full arch and face shot.



FHD FHD image support
The device shows FHD (1080p) in live image supported by a 5M sensor.



Color impressions
Adjust the color impression on camera to fit different monitors or screen.

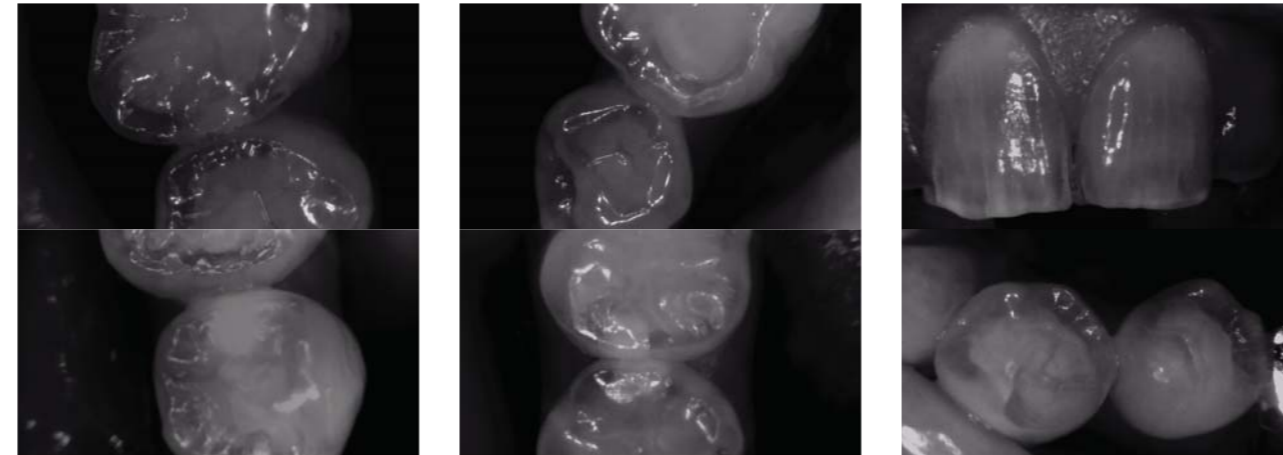


Same color chart image with x-rite



Transillumination mode
TR mode

- This camera mode provides the ability to examine the inside of enamel by use of a high transparency light source.
- Useful for detecting proximal caries and micro cracks.
- Advanced technology that allows for an image showing enamel penetration without x-ray radiation.



Fluorescence mode
FL mode

- Disease detection technology using natural fluorescence that occurs under specific illumination.
- The FL mode provides simple ways to detect disease: User will see green fluorescence on normal enamel and red fluorescence where there is bio-film such as plaque or calculus.
- Fluorescence loss where there is early caries (white spot).
- The FL mode provides the ability to detect early caries, tooth crack, and secondary caries.
- The FL mode is able to detect residual composite resin.
- The FL Mode supports 2 mode types: F mode and S mode.



3 in 1 mode
Multi mode

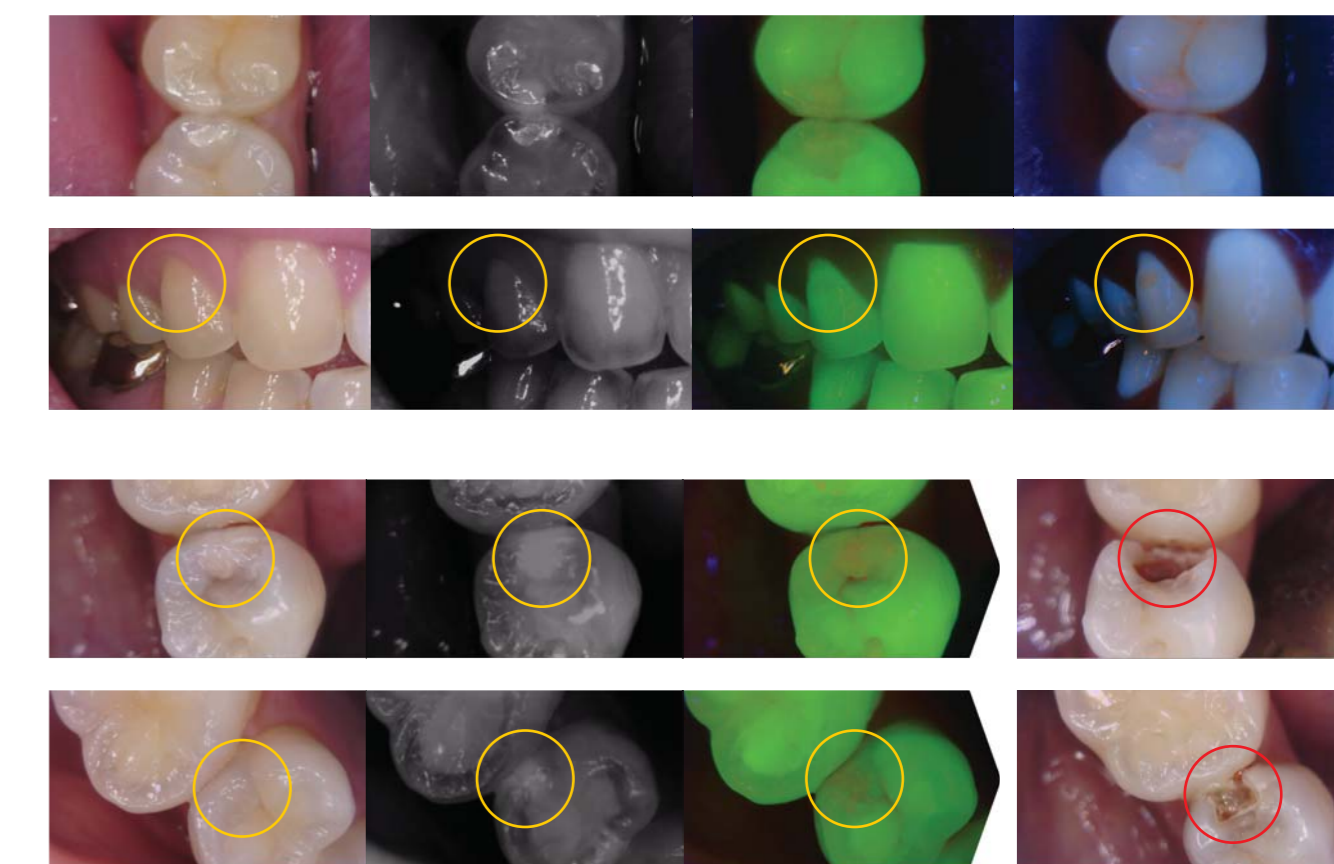
Limits on each detection mode

Each disease detection method has advantages as well as has limits.

MI mode Macro to Infinity Dental Camera mode	Hard to detect early stage caries.
TR mode Transillumination mode	No quantitative measurement is produced Subjective interpretation of whether a dark area on the gray-scale images is caries or a dental abnormality leads to many false positives
FL mode Fluorescence mode	Bacterial porphyrins, stains, tartar, food debris, and prophylaxis paste all fluoresce under the wavelengths used in these device, whether or not caries is presents, they can lead to false positive readings and unnecessary treatment. In addition, Streptococcus mutans and lactobacilli, the key bacterial initiators of caries, do not have porphyrins that fluoresce when exposed to the light emitted by the device.

Inspire takes advantages of each disease detection mode (MI, TR, FL), and to overcome limits of each detection mode it provide 3 in1 shooting for comparative analysis.

3in1 3in1 shooting example.



* 3in1 shooting may not be supported depending on dental imaging software